



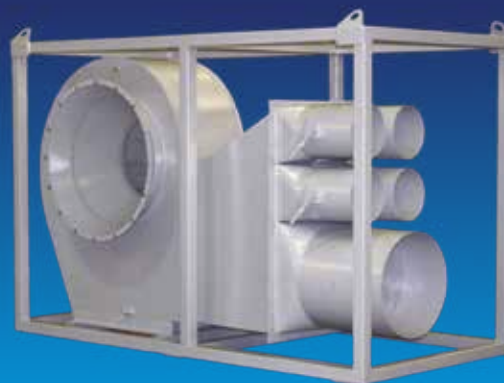
INDUSTRIAL TANK VENT FAN

Woodcock and Wilson manufacture a cost effective single inlet direct driven centrifugal fan with high performance for the introduction of fresh air to provide for a safe working environment and for gas freeing of oil and chemical tanks. Fans are fully portable so can be used on many vessels.

Whilst in today's safety conscious work place, the preferred option is of no-man entry into a confined space. In the necessary event of man-entry for tank cleaning, the requirement is for an extensive range of breathing apparatus, gas monitoring equipment and supply of fresh air.

The provision for the introduction of fresh air provides a safe working environment and gas freeing of tanks and therefore becomes paramount for the safe working environment for those involved in tank cleaning.

Woodcock & Wilson can provide a portable, electrically driven unit to provide fresh air for the safety of workers and of the vessels while cleaning of storage holds and tanks takes place. These units can be independently ATEX and/or IECEx Certified.





TECH SPEC & USEFUL INFO

IMPELLER TYPE

BFN centrifugal fan with flat backward inclined blades, direct driven.

ATEX

ATEX (II 2/3/G/D T1-T6) specifications available for hazardous areas.

MOTORS / ADDITIONAL EQUIPMENT

Zone 1, Ex de, IIB, T4, 440v/3ph/60Hz.
Flameproof Ex d control box incorporating a DOL contactor. EX d enclosure with on and off buttons complete with additional cabling with EX d gland at starter end. (Note: Plugs and sockets for remote connection not supplied).

EXTRA FEATURES

Each fan provides separate connections to the main tank with the use of flexible ducting. Each diffuser is adjustable to suit local conditions by the use of the built-in manual shut-off dampers. The blades, handles and spindles are manufactured in stainless steel. These fans are also designed so that they can be mounted on heavy duty solid castor wheels. We offer these with roller bearings having double swivel and lockable wheels at each side for ease of movement and safety around the deck. Also has engineered lifting points to enable relocation to other vessels or site. Air inlet is fitted with substantial guard as an additional safety factor. backward inclined blades, direct driven.



800TVF

4 x 300mm and 1 x 600mm duct connections,
supplying fresh air to tanks during cleaning.
Total weight approx. 1100kgs

710TVF

6 x 250mm duct connection, supplying
fresh air to tanks during cleaning.
Total weight approx. 800kgs.

